

Math Studies

1 I-84

Total
points

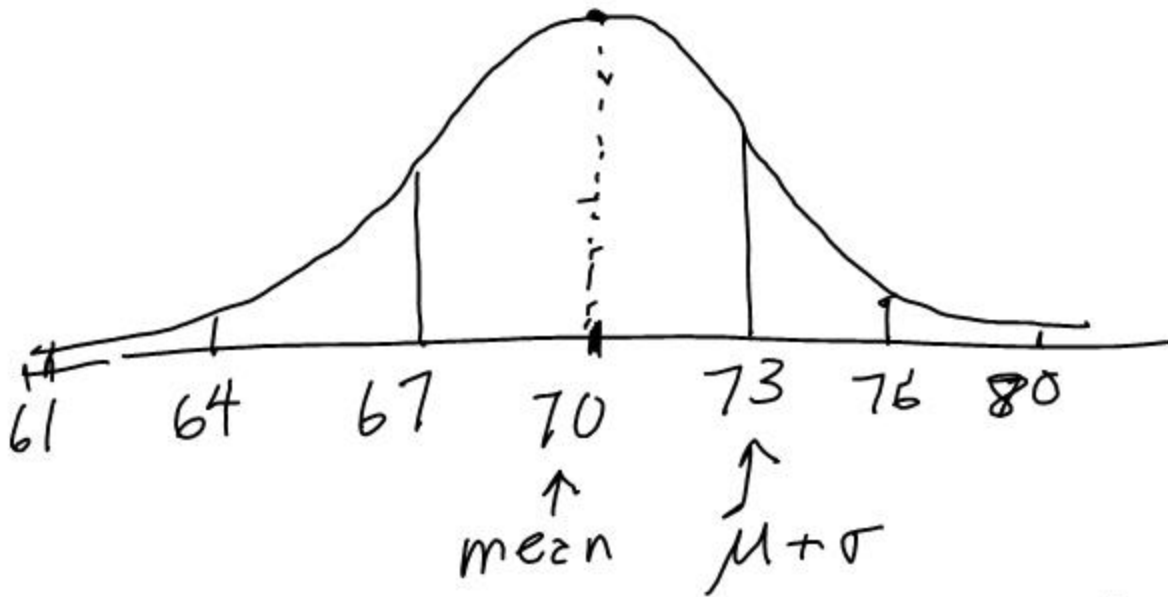
- Homework quizzes
- Quizzes (announced/unannounced)
- Tests
- Project grades
(Internal assessment)
Final paper - end of February

80% exam } IB grade
20% project }

Chapter 5

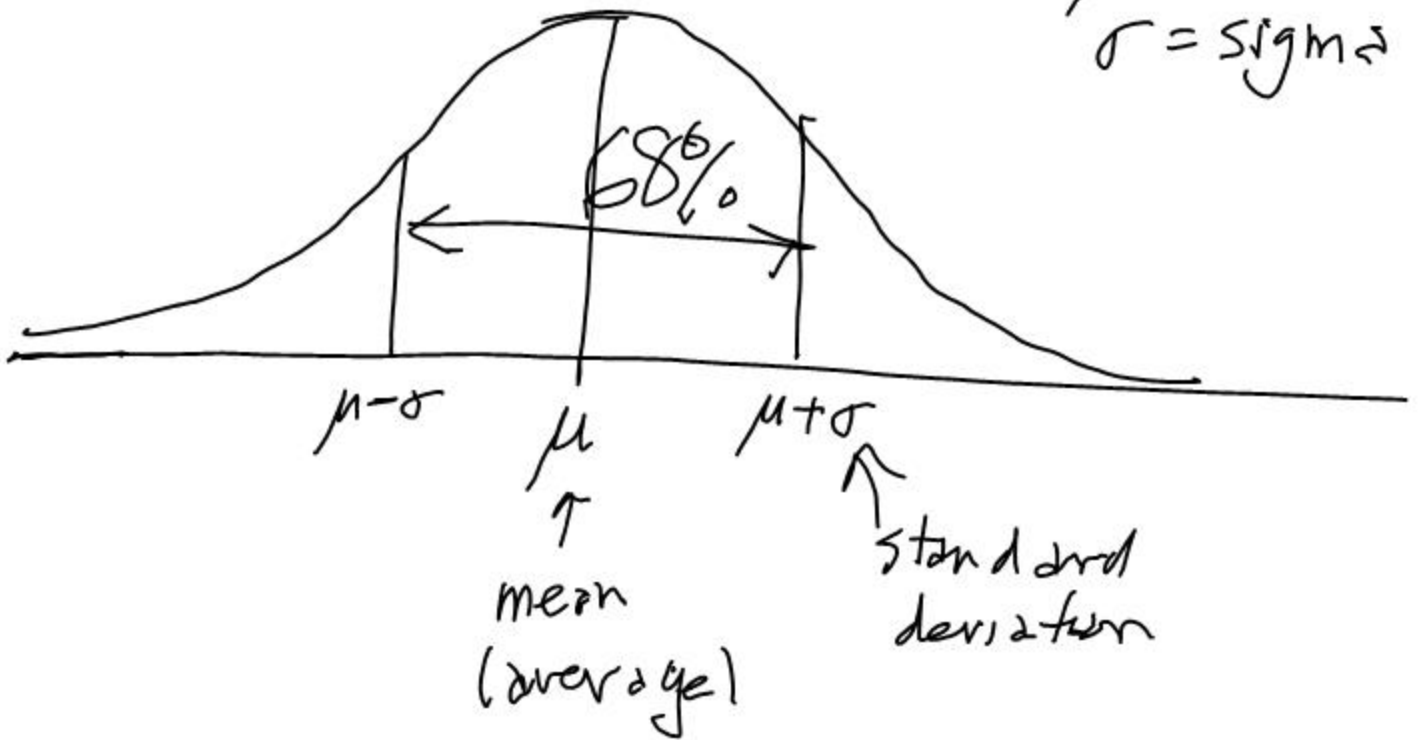
Statistics

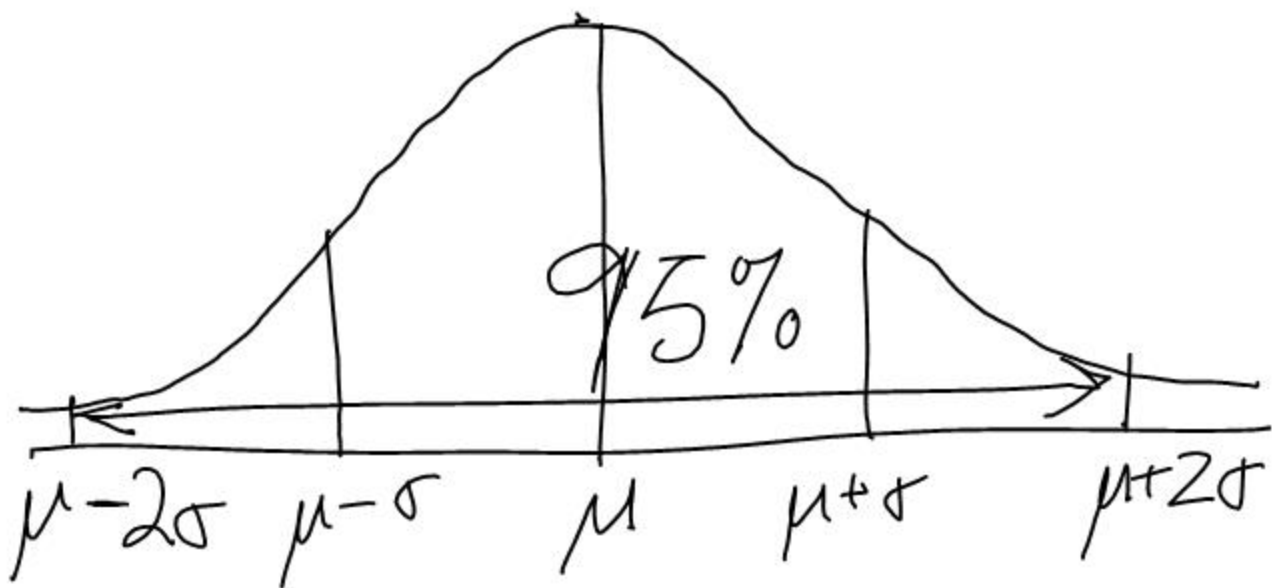
The Normal Distribution



Σ

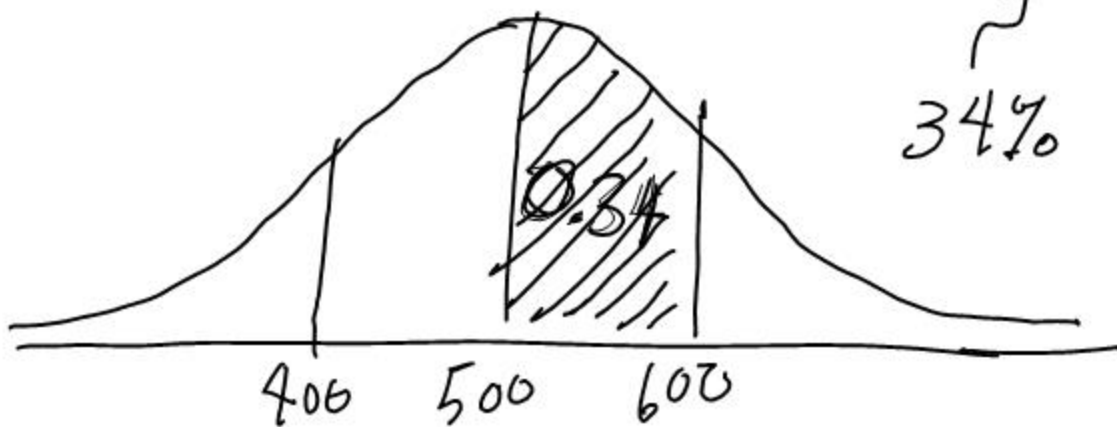
$\mu = \text{mu}$
 $\sigma = \text{sigma}$





EX. The mean SAT-M is 500
with a standard deviation of 100.

- What proportion of students score between 500 and 600? $\frac{0.34}{}$



- What proportion of students score between 300 and 600?

