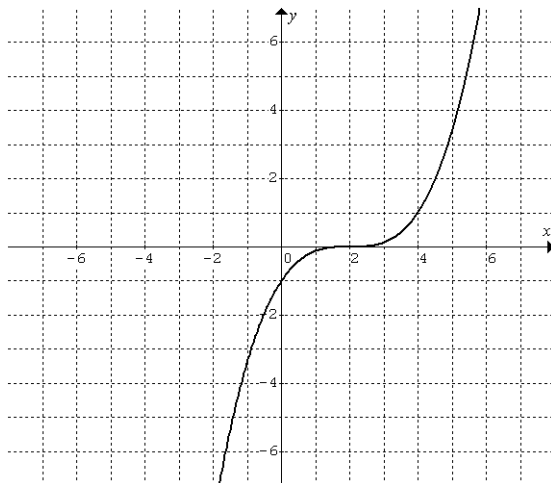
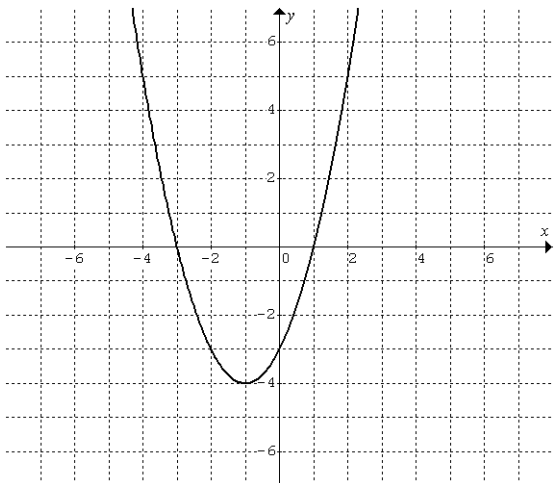


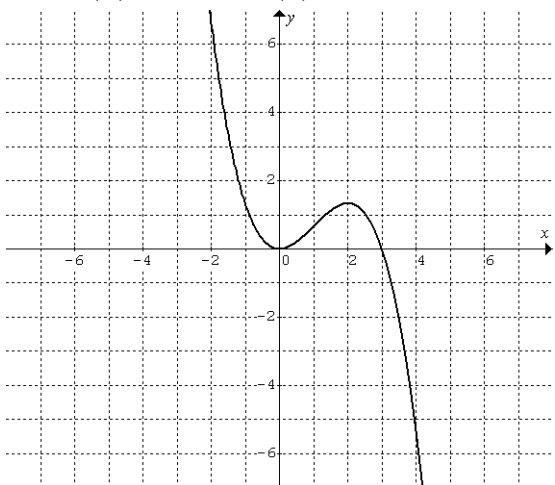
SET FOUR: Exercises -- Sketching Derivative Functions

For each function, [a] approximate the tangent line slopes, [b] sketch an approximation of $y = f'(x)$, and [c] make a sign line for $f''(x)$.

[1] $f'(-1) \approx$; $f'(-4) \approx$; $f'(2) \approx$ [2] $f'(-1) \approx$; $f'(0) \approx$; $f'(2) \approx$; $f'(4) \approx$; $f'(5) \approx$



[3] $f'(-1) \approx$; $f'(0) \approx$; $f'(1) \approx$
 $f'(2) \approx$; $f'(3) \approx$



[4] $f'(-2) \approx$; $f'(-1) \approx$; $f'(0) \approx$
 $f'(1) \approx$; $f'(2) \approx$

